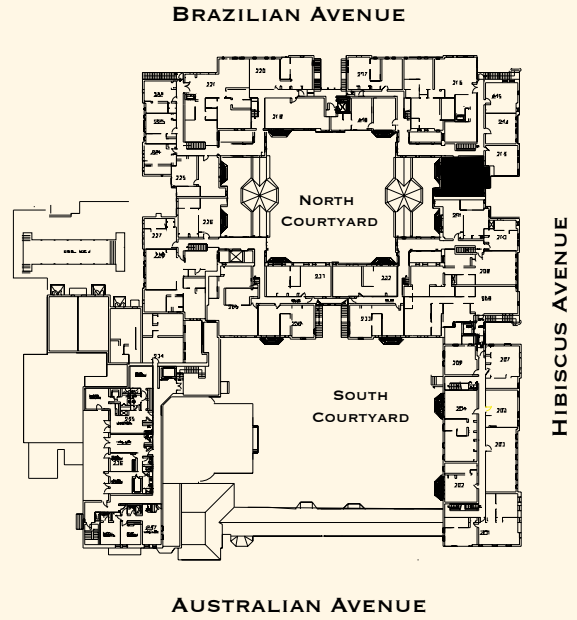


**CONDOMINIUM HOTEL - SUITE 212**  
**ONE BEDROOM - ONE BATHROOM**  
 680 SQUARE FEET, 63 SQUARE METERS



▶ - ENTRY  
 O.C. - OWNER'S CLOSET

  
**THE BRAZILIAN COURT**  
 PALM BEACH

301 AUSTRALIAN AVENUE, PALM BEACH, FLORIDA 33480 [WWW.THEBRAZILIANCOURT.COM](http://WWW.THEBRAZILIANCOURT.COM)

Developed by Ceebraid Signal Corporation.

Oral representations cannot be relied upon as correctly stating representations of the developer. For correct representations, references should be made to the documents required by section 718.503, Florida statutes, to be furnished by a developer to a buyer or lessee not an offer where prohibited, by state statute. We are pledged to the letter and spirit of the U.S. policy for the achievement of equal housing opportunity throughout the nation. We encourage and support affirmative advertising and marketing programs in which there are no barriers to obtaining housing because of race, color, religion, sex, handicap, familial status or national origin. This offering is made only by the prospectus for the condominium and no statement should be relied upon if not made in the prospectus. This is not an offer to sell, or solicitation of offers to buy, the condominium units in states where such offer or solicitation cannot be made. Prices, features, and specifications are subject to change without notice.

